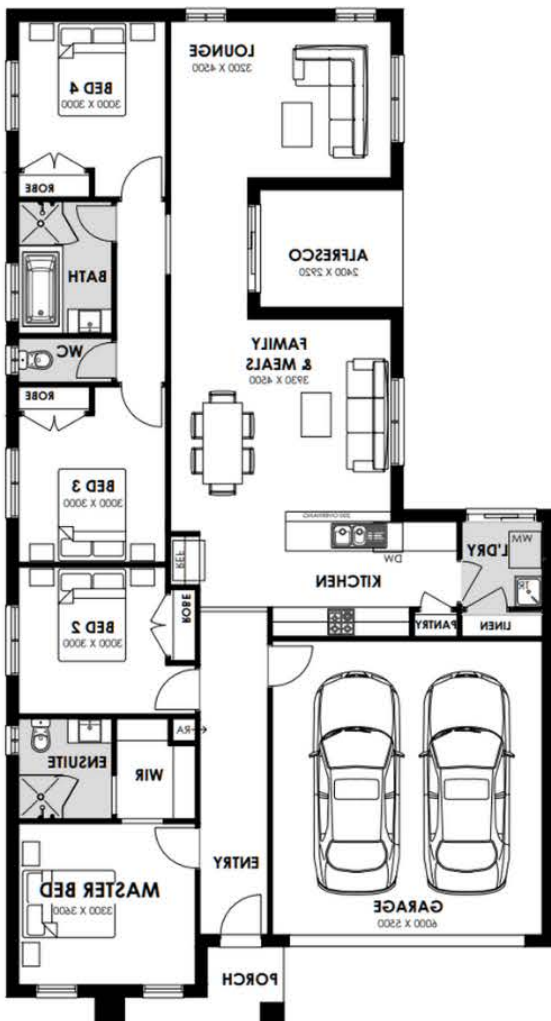


# FIXED PRICE | FULL TURN-KEY | LANDSCAPED House & Land Package



**Kew 20 (Yarra Facade)**

**4 Bed | 2 Living | 2 Bath | 2 Car**



## \$748,091



**SUE WILSON**  
PROPERTY

**Lot 64 (400m<sup>2</sup>) Jenkins St  
Werribee - GRANGE ESTATE**

- Fixed Site Costs & FULL TURN-KEY
- Stone Benchtops
- LED Downlights
- Increased Ceiling Height
- Stainless Steel Appliances + Dishwasher
- Window Furnishings & Timber Laminate Flooring
- Ducted Heating & Split System Cooling to Family
- Landscaped Front/Rear Gardens
- Colour Concrete Driveway & Front Porch
- Fencing to Sides/Rear + Wing Fence & Gate
- Clothesline, Letterbox, Brick Infills
- Flyscreens & Flydoors

**Contact Sue Wilson**  
**0418 387 295**  
[www.suewilsonproperty.com.au](http://www.suewilsonproperty.com.au)

